

SLUG MAGAZINE

SOUNDWAVES FROM THE UNDERGROUND



Duration: 48:30 (mm:ss)

EPISODE #28 - 1/16/12

The Sugar Show, Ferocious Oaks, New Frontier, Daisy & The Moonshines, Nova Chamber Series

This week, SLUG columnist Mariah Mellus chats with Stephen Brown of SB Dance and Brittany Reese of the Sugar Space about the upcoming Sugar Show, SLUG writer Ben Trentelman talks with curator Shari Firlot about the New Frontier art exhibition taking place during Sundance, and SLUG writer Scott Farley interviews the NOVA Chamber Series' artistic director Jason Hardink. Plus, music from Provo folk band Ferocious Oaks and new music from groove grunge rockers Daisy & The Moonshines. Give us a ring about something from the show, drunk dial us, ask for our advice on anything, or just send us your feedback by calling our automated voicemail line at 858-233-9324. You may get played on the show!

Host: JP

Executive Producer: Angela H. Brown

Lead Producer: Gavin Sheehan

Associate Producers: Jeanette D. Moses, Ricky Vigil, Esther Meroño, Jonathan Paxton

Theme Song by Birthquake

Theme Producer: Jesse Ellis

Art Design & Logo: Thy Doan

Technical Designer: Kate O'Connor

Interviewers: Mariah Mellus, Ben Trentelman, Scott Farley

Music This Episode: OK Ikumi, Ferocious Oaks, I'm Designer, Daisy & The Moonshines, Ravel, Ives

<http://www.slugmag.com/soundwaves/Episode--28---1-16-12>

CITYWEEKLY

DANCE

The Sugar Show



With Salt Lake City being such a dancer's town, there are surprisingly few opportunities for local budding choreographers to get their work professionally produced. SB Dance and Sugar Space have specifically designed their annual Sugar Show to fill that gaping hole.

Now in its fourth year, the idea behind Sugar Show is to provide not only an opportunity to showcase promising choreographers, but also access to mentors, financial awards, studio space and a little bit of exposure. This year's preliminary round, held in November, saw participants "speed pitch" their ideas to a panel that ultimately whittled the hopefuls down to five participants. After months of fine-tuning their pieces, Efren Corado, Transfusion Hype, Nell Suttles, Joni Tuttle and fivefour (Cortney McGuire and Leah Nelson) will present their work at this final show to be judged by the attending audience and a panel of shrewd professionals, all in hopes of taking home top honors. (Jacob Stringer)

**The Sugar Show @ Rose Wagner Center, 138 W. Broadway, 801-355-2787, Jan. 21, 8 p.m., \$15.
ArtTix.org**

Date: Jan 21, 2012

Time: 8 pm

Phone: 801-355-2787

Address: 138 W. Broadway, Salt Lake City, 84101

Where: Rose Wagner Center

<http://www.cityweekly.net/utah/event-97104-the-sugar-show.html>



Titus Productions presents MURDER ON THE NILE for a good cause

January 27, 2012 by [Melissa Leilani Larson](#)



Only 3 performances left!

SALT LAKE CITY — Thursday night I attended my first production at the Sugar Space just off 7th East, a performance space I've been hearing a lot about. The theatre itself is actually a lot bigger than I would have guessed from the foyer. It's a good sized space; if anything, it could probably do with more seating. The production happening there now is Agatha Christie's *Murder on the Nile*, staged by Titus Productions and directed by [Jake Andersen](#).

I love [Agatha Christie](#). She wrote hundreds of twisted stories (there's a double meaning there), some of them rather grisly. And though a number of them have similar elements, they always keep you guessing. *Murder on the Nile* is no exception.

The play has quite a few eccentric characters who, in traditional Christie style, first present themselves as strangers but whose lives, it turns out, actually intersect in shocking ways. At the center of this particular whodunnit is actress Kay Ridgeway Mostyn (Serra Willis), the wealthiest woman in England. To the surprise and dismay of her fans, Kay has recently married the penniless Simon Mostyn (Michael

Chestnut) a young man far below her in social standing. The couple, recognized wherever they go, are taking a honeymoon cruise aboard the *Lotus*, a ship that cruises the Nile. Also on the *Lotus* are renowned novelist Salome Ottoman (Rachael Rasmussen) and her daughter Christina (Olivia Osborne). Though wealthy herself, Salome is on the brink of a slander lawsuit brought against her by Kay; if the case carries, Salome will lose everything. Kay's mistreated maid Louise ([Devin Johnson](#)) is on board, as is a doctor whose reputation was ruined by Kay's father (Lorrinda Christen), as well as Kay's uncle, Ambrose Pennefeather, a canon in the Anglican church.

Last to board the ship is Jacqueline de Severac (Amber Avery), Kay's former best friend and, we discover, Simon's former fiancée. How's that for a plot thickener? Jacqueline, it seems, can't quite forgive Kay or get over Simon and has followed them all the way to Egypt on their honeymoon. You may have guessed that Kay is the one who ends up dead. As to who did it, well... Christie packs the *Lotus* full of possible motives, and I won't spoil the ending, but some may find the killer to be as surprising as Kay's whirlwind wedding.

The play and the production both have their flaws. *Murder on the Nile* is not Christie's best, full of obvious red (pink?) herrings and pointless characters. As far as the show goes, the acting is rough around the edges, tipping Christie's dated script into the realm of melodrama. I felt like I was being yelled at most of the evening; sometimes the volume was a valiant attempt at projection, but mostly it was an unnecessary expression of emotion. Accents also tended to get in the way of things.

Stand-outs the cast include Rachel Rasmussen, whose portrayal of the tipsy Salome always won a chuckle. Though he doesn't look the least bit Egyptian and is probably half the size of everyone else in the show, 8th grader Nate Andersen is a firecracker as the *Lotus*'s Steward, serving drinks and bossing the crew. I was impressed by the number of high and junior high schoolers in the cast (and even running the show's tech).

This was my first experience with Titus Productions. My impression is that they are family-oriented theatre group out to have fun with a classic Christie caper. The production experience among the cast differs, and there is a range of ages represented. This community theatre outing in particular is attached to a fine cause: all proceeds from this weekend's performances will help a local family whose young father is being treated for cancer; if you are interested in learning more or making a donation, I've included a link to Titus's Facebook page below in the info box.

Did the show have the gleam and polish of a professional show? No. Walking in and seeing the set, my first thought was that I was in the wrong place, that I had wandered into someone's wedding reception. Could this be the 1950's? Maybe kinda sorta. But hey—a group of family and friends got together and put on a show, and for a good cause, to boot. That takes guts and passion. Who am I to get in the way of that?

Titus Productions's **Murder on the Nile** is playing in the Sugar Space Studio for the Arts (616 East Wilmington, Salt Lake City). Performances are January 27 at 7:30 PM and Saturday, January 28 at 3:00 and 7:30. Tickets are \$7 at the door, and all proceeds go to the Clint Bauer family.

Visit <https://www.facebook.com/titusproductionstheatreco?sk=info> for more information.

<http://utahtheatrebloggers.com/8322/titus-productions-presents-murder-on-the-nile-for-a-good-cause>

CITYWEEKLY

VISUAL ART

Sugarhouse Art Walk

Art lives in Sugarhouse. You are invited to the Sugar House Art Walk, Friday, Feb.10th from 6-9. FREE. Food, music and fabulous art. Maps at each location! Among participating businesses are Rockwood Studios, Local Colors, Sugar Space, The Joint, Sugar House Coffee, 21st Studios, Artistic Framing Co., Awakening Heart, and Adjusting Sails Dirtworks. For more info visit <http://thesugarspace.com/sugarhouse-art-walk/>.

Date: Feb 10, 2012

Time: 6 pm

Address: 2100 S. 1100 East, Salt Lake City

Where: Sugar House Business District

<http://www.cityweekly.net/utah/event-93812-sugarhouse-art-walk.html>

CITYWEEKLY

DANCE

Co·da Open Auditions

co·da is the new, professional modern dance company in residence beginning March 2012 at Sugar Space Studio for the Arts.

Membership in co·da is based on an audition process consisting of a 2 minute solo, 30 second teaching phrase and an interview. Initial members will be chosen by a panel of artists. After the first installment, new members will be voted in by current members along with Sugar Space.

co·da is seeking creative and talented dancers with a unique and original voice who are interested in exploring new approaches to dance.

Possible candidates should be at a professional level, able to teach open classes on a rotating basis, and willing to participate in the running of the company as a whole with a minimum commitment of six months. Please visit <http://thesugarspace.com/> for more information on the audition process.

Date: Feb 16, 2012

Time: 7 pm

Phone: 888-300-7898

Address: 616 E Wilmington Ave (2190 South), Salt Lake City, 84106

Where: [Sugar Space](#)

<http://www.cityweekly.net/utah/event-109756-co%C2%B7da-open-auditions.html>

CITYWEEKLY

DANCE

Body Logic: Words Unspoken



Words Unspoken will be Body Logic's second full concert since being founded in 2009. The show will present works by Utah Valley University's modern dance professors Amy Markgraf-Jacobson and Angie Banchero-Kelleher (RDT alumni), as well as several works by various Body Logic members. Don't miss out! Tickets \$10.00 dollars online or at the door. Please arrive early, seating will be limited.

Date: Feb 24, 2012

Time: 7:30 pm

Phone: 888-300-7898

Address: 616 E Wilmington Ave (2190 South), Salt Lake City, 84106

Where: Sugar Space

<http://www.cityweekly.net/utah/event-109760-body-logic-words-uns.html>

CITYWEEKLY

Defining Dance



It's definitely not the rule of thumb in this town—with Ririe-Woodbury Dance Company and Repertory Dance Theatre ruling the roost—but it's all too common that most big-name, well-funded and celebrated choreographers have been men. So Sugar Space has decided to do something about it with an annual venture into showcasing women choreographers—*Suite: Women Defining Space*.

The structure of *Suite* is to spotlight emerging women choreographers from the community—this year with Cortney McGuire and Leah Nelson (who together make up the dance duo fivefour), Erica Womack and Laura Blakely—and provide them with free or low-cost rehearsal space, subsidized production and technical expenses, help in marketing and mentoring by previous participants. In the end, of course, is the ultimate payoff with a weekend of professionally produced and polished performances. Sugar Space founder and director Brittany Reese hopes this arrangement is a model that allows for both growth in the field and artistic progression for these participants.

“It is important for me to do a show like this because it provides opportunity and support for artists to create and experiment with their craft, which is exactly why I opened Sugar Space to begin with,” Reese says. “Sugar Space is an advocate for the arts in general, and not necessarily only for any one singular group; however, doing a series like *Suite* brings a kind of focus to women choreographers that is needed, and also has led to the creation of some great art.” (Jacob Stringer)

Suite: Women Defining Space @ Sugar Space, 616 Wilmington Ave. (2190 South), 888-300-7898,

March 1-3, 8 p.m., \$12 students, \$15 general.

TheSugarSpace.com

Date: Mar 1, 2012

Time: 8 pm

Phone: 888-300-7898

Address: 616 E Wilmington Ave (2190 South), Salt Lake City, 84106

Where: [Sugar Space](#)

<http://www.cityweekly.net/utah/event-109766-suite-women-defining-dance.html>



Art Happenings: Round-Up for March 19-26

Written by Adele Flail

Welcome back to the second installment of our weekly picks!

Friday March 23

The national conference for the Artist, Interrupted: A Women's Art Collective group is wrapping up this week. If you're not familiar with this group, their *raison d'être* is simple: "An 'artist, interrupted' is a woman who has placed her art on hold from five minutes to 50 years, in order to support family needs, career changes, relocation, or just life in general...because sometimes, life just happens." On Friday, check out Initial Impressions, a mixture of live and film dance works choreographed and performed by women from throughout the United States (**Sugar Space** 616 Wilmington Ave, \$5). Late registration is available from March 18-22; costs for classes, workshops, and performances vary.

<http://www.catalystmagazine.net/component/k2/item/1900-roundup-march-19-2012?highlight=WYJzdWdhcilsInNwYWNIliwic3VnYXlgc3BhY2UiXQ==>

CITYWEEKLY

THEATER

Franki And Johnny In The Clair De Lune

Frankie has had more disappointments than delights in life and right now she would be delighted if Johnny, her co-worker & date would leave her apartment. Johnny has other ideas. What follows is an honest, funny & unflinching look at what happens when two disenchanted restaurant workers confront their fears & dreams about relationships, age, sex and love in a world where the chips seem stacked against them. New York Post called Frankie and Johnny a "...very sweet, extraordinarily funny, romantic and ribald comedy..." Tickets are \$20 at the door.

Date: Mar 29, 2012

Time: 7:30 pm

Phone: 888-300-7898

Address: 616 E Wilmington Ave (2190 South), Salt Lake City, 84106

Where: Sugar Space

<http://www.cityweekly.net/utah/event-109779-franki-and-johnny-in-the-clair-de-lune.html>



Posted by [Tony Hobday](#) on Mar 30, 2012 in Arts News



Walk Sugar House free or die

The Sugar House Art Walk came to be shortly after James Adelman opened The Joint, a chic chiropractic care center nestled in the McIntyre Shopping Center (southeast side of Barnes & Noble parking lot). Similar to the downtown Gallery Stroll, the art walk, co-organized by Adelman, is an opportunity to familiarize, or reacquaint, people with the Sugar House art community and, according to Adelman, “to get people walking.”

The first SHAW took place in September 2011 and featured approximately 30 artists in eight venues. Since then the list of participating venues has nearly doubled to 15, and featured artists range from painters to photographers and from sculptors to craftsmen. The art venues, though mostly clustered loosely around the 2100 South and 1100 East intersection, include Two Dancing Cats Gift & Gourmet at 1790 S. 1100 East, and The Sugar Space Studio for the Arts at 616 E. Wilmington Ave (2190 South).

This month’s art walk, on April 13, will also include an exclusive event at The Sugar Space, a multidisciplinary arts organization. The founder, Brittany Reese, has generously offered the use of the black-box performance space for two special-engagement screenings of the Sundance award-winning documentary film *Love Free or Die*. The film, by Macky Alston, received a U.S. Documentary Special Jury Prize for an Agent of Change at the 2012 festival. The documentary’s core study is how the

Episcopalian Church and Gene Robinson underwent much heated scrutiny, in 2003, when he was elected the church's first openly gay bishop. Alston's vision for *Love Free or Die* exudes unbridled passion unlike many others I have seen. It is angelic and will give you faith and hope, if nowhere else, in yourself.

The Sugar House Art Walk will be held Friday, April 13, 6-9 p.m., followed by screenings of the film at 9 p.m. and again at 11 p.m., at Sugar Space. Although the art walk is a free event, tickets to the screenings are \$7 in advance and \$10 and will help in sustaining the monthly art event. To purchase tickets go to sugarspace.com.

<http://gaysaltlake.com/news/2012/03/30/walk-sugar-house-free-or-die/>

The Daily Utah CHRONICLE

Drag competition class turns queens into glitzy divas

Ainsley Young



by: [Ainsley Young](#) on April 5, 2012



Make up artist Tony Acevedo demonstrates how to apply makeup for an upcoming drag queen and king competition April 20 at Sugar Space.

"Makeup is war paint for queens. It makes you feel like a diva. It makes you into a whole new person — you can put it on and win competitions," said Tony Acevedo, an employee at MAC Cosmetics in Fashion Place Mall.

Acevedo and his assistant, Rachelle Beagley, a freelance artist, came to the Lesbian Gay Bisexual Transgender Resource Center to teach a class instructing drag queens on how to apply makeup and look both natural and theatrical.

"Drag is sculpting a new face," Acevedo said. He and Beagley did a live makeup demonstration showing how to apply makeup and gave pointers about different products and brushes to use.

In preparation for the upcoming drag competition called "Silence is a Drag," Eduardo Galindo, a senior in health promotion and education and the associate director for the Diversity Board, was the model for Wednesday night's lesson.

"This will be my first drag competition," Galindo said. "I'm still thinking of my name, though."

"It's called 'Silence is a Drag' because it's held on the National Day of Silence [in the LGBT community]. We're actually having a rally earlier that day from 1 [p.m.] to 3 [p.m.] to break the silence on the Union patio," Galindo said.

The competition will be open to kings and queens of all types and will be held on April 20 at Sugar Space in Salt Lake City. There will be a \$3 donation for admission. Proceeds will go to the resource center and will fund scholarships. Doors will open at 9:30 p.m. and the competition will end at midnight. The drag competition is part of Ally Awareness Week.

Another drag competition class will be held on April 6 in the LGBT center at 5:30 p.m.

All who are interested and seek further information about the competition are invited to contact Bri Blanchard at (801) 587-7973.

Contact Ainsley Young at a.young@chronicle.utah.edu

<http://www.dailyutahchronicle.com/?p=2570067>

CITYWEEKLY

VISUAL ART

Sugar House Art Walk



The Sugar House Arts Events committee has planned the area's third Art Walk. The first two were held in September 2011 and right before Valentine's Day 2012. It's a chance to explore one of Salt Lake City's most art-friendly—as well as walkable—neighborhoods.

Venues participating include The Joint, Rockwood Art Studios, Sugar House Coffee, 21st Studios, Artistic Framing Company, Awakening Heart, Adjusting Sails Dirtworks, Sugar Space, Local Colors and more. The walk will also feature an evening fashion show and dancing at Karamba, at 1051 E. 2100 South. The walk aims to showcase local venues and merchants, part of the “re-branding” of Sugar House, according to James Adelman, one of the organizers.

The evening includes two Saturday screenings of the documentary *Love Free Or Die*—about the first openly gay Episcopal bishop—which was awarded a Special Jury Prize at Sundance this year. Watch the film at 9 and 11 p.m. at Sugar Space, at 616 E. Wilmington Ave. (Brian Staker)

Sugar House Art Walk @ 2100 South between 950 East and 1150 East, and along 1100 East, April 13, art walk free; tickets for film screening \$7 in advance, \$10 day of screening.
[SugarHouseArtWalk.com](http://www.cityweekly.net/utah/event-115626-sugar-house-art-walk.html)

Date: Apr 13, 2012

Time: 6 pm

Address: 84101

Where: [Various locations](#)

<http://www.cityweekly.net/utah/event-115626-sugar-house-art-walk.html>

The Daily Utah CHRONICLE

Ally week promotes community discussion

Ainsley Young



by: Ainsley Young on April 15, 2012

Every year, the U's Lesbian Gay Bisexual Transgender Resource Center hosts the five-day Ally Week. This year, the theme is "Advocate, Listen & Relate ... Why?" The LGBT center will be hosting several events in raising awareness and support of the LGBT community.

Ally Week has traditionally been a time for the LGBT center to advocate its causes and to celebrate its "allies," people who are friendly to LGBT causes.

On Monday, there will be a discussion on the documentary "Bullied" with the "Outlaws" student group. The screening will take place in the Sutherland Moot Courtroom in the College of Law at 12:15 p.m. Later that day, the Community Panel will follow the documentary in the Salt Lake City Main Library Auditorium from 6:30 p.m. to 8:30 p.m.

On Tuesday, there will be an interview with Jamie Nabozny, a man known for winning a lawsuit against his high school administrators for failing to stop the verbal and physical bullying he suffered for being gay. The interview will be held from 9 a.m. to 10 a.m. on KCPW 88.3 FM/105.3 FM. From 1 p.m. to 4 p.m., there will be an open Safe Zone training in the William Browning Building in room 617.

On Wednesday, the documentary "Bullied" will again be screened, along with keynote speaker, Nabozny, in the Union Saltair Room from 12 p.m. to 1:30 p.m. There will be a Hinckley forum on the documentary with a panel discussion, including Nabozny, in the Hinckley Caucus Room in OSH from 2 p.m. to 3 p.m.

On Thursday, the annual Social and Award Ceremony for Ally of the Year will be held in the Union Den from 3 p.m. to 5 p.m.

Friday is the National Day of Silence. A rally to break the silence will be held on the Union Patio at 1 p.m. Later Friday night, there will be a drag show at Sugar Space entitled "Silence is Such a Drag." The doors will open at 9:30 p.m. and the suggested admission is a \$3 donation. The show will run from 10 p.m. to midnight.

The drag show is a collaboration with the U's Diversity Board, said Eduardo Galindo, associate director of the board and a senior in health promotion and education. Galindo also said that the show is inspired by the television show, "RuPaul's Drag Race," where contestants perform in front of a panel of judges.

"But nobody has to sashay away," said Galindo, referencing the show's equivalent to eliminating contestants. "The judges will pick the top two performers and have them lip sync for the crown."

Galindo said the proceeds from the donation fee will go to the LGBT's Resource Center for scholarships.

Contact Ainsley Young at a.young@chronicle.utah.edu

<http://www.dailyutahchronicle.com/?p=2570962>

CITYWEEKLY

THEATER

FRACK



When it comes to most issues facing the world today, politics can only accomplish so much—and, arguably, most times very little. That’s why choreographer Daniel Mont-Eton—in conjunction with Sugar Space—decided to use the thought-provoking arts to tackle some labyrinthine arguments surrounding environmental issues.

FRACK is designed to augment the green conversation by bringing together artists such as Efren Corado, Erica Womack and Tanja London with a slideshow and discussion led by Zack Pontious. “I believe the arts can shed new light on political and environmental topics,” Mont-Eton says. “Art, performance and film can be so visceral that it allows for a much deeper reaction to be felt from the audience than a lecture could bring about.” There will be an open discussion after the concert, where members of the audience will have the opportunity to engage with the artists about how art can be used to create environmental commentary. (Jacob Stringer)

***FRACK* @ Sugar Space, 616 E. Wilmington Ave. (2190 South), 888-300-7898, April 20-21, 7:30 p.m., \$10-\$12. TheSugarSpace.com**

Date: Apr 20, 2012

Time: 7:30 pm

Phone: 888-300-7898

Address: 616 E Wilmington Ave (2190 South), Salt Lake City, 84106

Where: [Sugar Space](#)

<http://www.cityweekly.net/utah/event-115470-frack.html>

CITYWEEKLY

SPECIAL EVENTS & FESTIVALS

Influx Dance Company: Orange Party

Wear your fanciest, freakiest, most diva Orange costume. Eat, drink, and dance to live music. View 5 dance works throughout the evening choreographed by inFluxdance members and collaborators. Meet and greet a fantastic community of artist and supporters of the arts while also supporting a company who aims to use dance as a vehicle for social change and community building right here in Salt Lake City. Join inFluxdance and Brolly Arts for an evening of innovative costuming, reckless dancing, community building, and beautiful choreography.

\$15 suggested donation for patrons who wear orange.

\$20 suggested donation for Patrons who need to dip into the inFluxdance Dress-up trunk to find a costume!

Date: Apr 28, 2012

Time: 8:30 pm

Phone: 888-300-7898

Address: 616 E Wilmington Ave (2190 South), Salt Lake City, 84106

Where: Sugar Space

<http://www.cityweekly.net/utah/event-116552-influx-dance-company-orange-party.html>

CITYWEEKLY

GAVIN'S UNDERGROUND

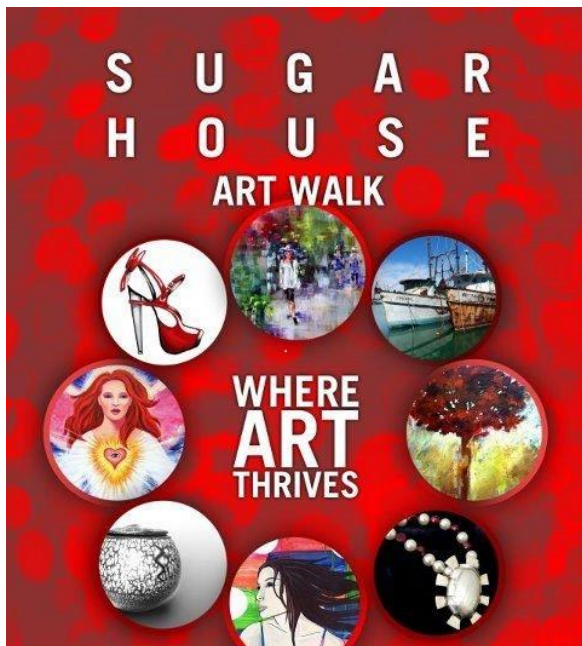
Sugar House Art Walk

by Gavin Sheehan



POSTED // 2012-06-06

While the Salt Lake Gallery Stroll may be the most prominent of the artistic jaunts held every month, there are many other cities that have joined in the experience in their own ways. Provo, Ogden, Moab, Park City and even St. George have coordinated their own efforts to bring people out on a Friday evening, creating their own versions of Stroll with roughly the same guidelines and amount of galleries around. But few have ever tempted to duplicate the same experience anywhere around the Salt Lake Valley.



However, back in February, Sugar House became the first area to branch off from Stroll with its own monthly version, the Sugar House Art Walk. Roughly 20 galleries, businesses and normally unconventional spots within a three-block area open their doors on the second Friday of every month. The evening features artists from around SLC and parts of Utah for people to browse and maybe even make purchases, and brings people back to Sugar House. As we get ready for the next one happening this Friday, June 8 from 6-9 p.m., we chat with Art Walk founder James Adelman about the event and his thoughts on the art scene.

James Adelman



SugarHouseArtWalk.com

Gavin: Hey, James. First off, tell us a little bit about yourself.

James: I was introduced to art by my family at an early age. My grandmother was a designer in NYC and eventually became an accomplished oil painter in Arizona. My mother introduced me to music and I followed this passion throughout my childhood and attended Interlochen Arts Academy, where I majored in jazz trumpet. My son, Nicholas, attended Interlochen Arts Camp for two years, focusing on graphic design and 2- and 3-dimensional art. He and his sister, Samantha, attended The Academy of Art San Francisco.

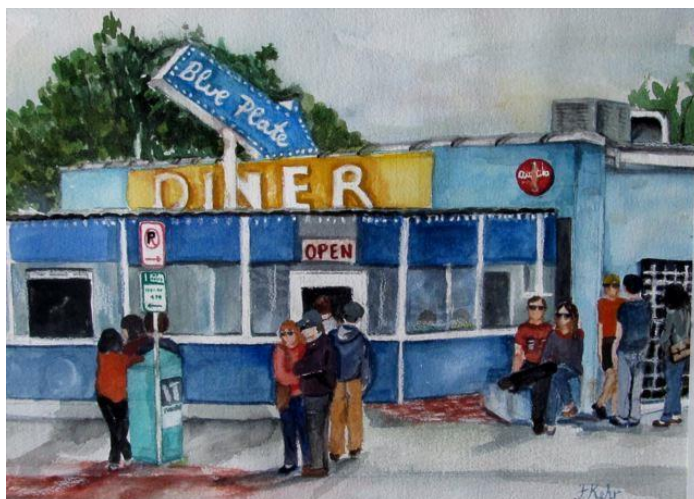


Gavin: How did you first take an interest in the locals art scene, and what really drew you to going out and seeing what was there?

James: After opening The Joint, I met Laurie Bray, Photography by Laurie, at her studio in Rockwood Gallery. I was intrigued with the unique concentration of local artists in the area and mentioned that I thought Sugar House would be a great area to have a "walkable" Art Walk. Together with Sugar House Coffee, 21st Studios, Artistic Framing, Adjusting Sails Dirtworks and Sprague Library, we formed the first Sugar House Art Walk, (SHAW).

Gavin: Before that, where did the original idea come from for Art Walk?

James: My uncle had started the Scottsdale Art Walk in the early '70s and it inspired me to start a similar version in Sugar House.



Gavin: What was it like for you going around and getting businesses and galleries on board, and what was the criteria for picking whom to approach and work with?

James: At first, it was something I thought would be fun to do with my children, but as time went on, it became a way of creating a unique identity for artists, galleries, restaurants and small businesses in Sugar House.

Gavin: Considering the places involved, how much of the art is chosen by them and how much do you yourself pick out to showcase?

James: All galleries, studios and businesses select the art they wish to display. We have encouraged small businesses to display art in all forms -- food art, paintings, sculpture, pottery, jewelry, crafts; just artisans of all kinds. Live Art is one of our trademarks, from painting to pottery throwing. The artists at the venues submit several options, then the graphic designer -- my son -- chooses the best image to fit the overall design of the quarterly poster.



Gavin: You held the first walk being last October. What was that first evening like, and what did you learn from that first run?

James: We actually held several art walks, in October and November of 2011, and in February of this year. This April, though, was the debut of the monthly sequence, on second Fridays. It was very exciting in the first night. We had a great response from local merchants, artists and patrons. The buzz caught on and the rest is history. We started with eight venues and now have over 16. We learned that the Art Walk is a great concept, and that it will be a great event for Sugar House. We also learned that all good things take time, effort and commitment to thrive. We really needed to organize, communicate and coordinate better. And most importantly, we have to find ways to advertise and promote our event, which is why we really appreciate the opportunity you're providing us now.

Gavin: Who are some of the artists you've had on display, and what's their reaction been to the event?

James: In addition to my Grandmother Elsie Orovan and my children, Nicholas and Samantha Adelman, we have showcased notable local artists Pamela Nielsen, McGarren Flack, Clarence Bowman, and most currently, Darin Jones.



Gavin: For many familiar with our art scene, there's a lot of similarities between your event and Gallery Stroll, or any of the "art evenings" held in other major neighboring cities, for that matter. Aside from location, what do you do to separate yours from the others in the public eye?

James: Our walk is unique in several ways. Not only is our event concentrated in a specific location and therefore actually "walkable," we also encourage artists of all types to participate, beyond the traditional galleries involved in the Gallery Stroll. For instance, our venues include independent studio artists, coffee shops, medical clinics, public libraries, gift boutiques, night clubs, and sponsoring restaurants, just to name a few. We also sponsor and encourage "After Party" events including movie screenings and night club events.

Gavin: You've only set three of these up for the spring so far. Are you planning to do this for every season, or is the plan to keep it exclusive to this season?

James: Our plan is to have Art Walks on the second Friday of every month, February through November, skipping December and January due to weather.



Gavin: Tell us about some of the work we'll be able to see during the June event happening this Friday?

James: There are a number of unique events for the upcoming June 8 Art Walk. Darin Jones will be unveiling a commissioned painting with live art demonstrations at The Joint; Sprague Library will be showcasing a light-art installation synchronized to live music from The School of Rock; and Adjusting Sails Dirtworks will have live raku firing and pottery throwing. We have multiple independent-art studios participating; Rockwood Art Studios, where you can see the works of over 25 Sugar House artists; an artist cooperative group, Local Colors; the Sugar Space theater; Awakening Hearts book and gift shop; and Two Dancing Cats -- a gift boutique and gourmet food vendor. Unhinged will have a variety of art mixed with vintage clothing, Fankhauser Jewelry will showcase live jewelry works and Sugar House Coffee will have live music and multiple local artists.

Gavin: Moving on to local art, what are your thoughts on our art scene as a whole, both good and bad?

James: Salt Lake City is a vibrant cross of styles. Each individual neighborhood has a uniqueness and eclectic nature, from the Avenues to 9th & 9th, 15th & 15th to Sugar House -- a cool cross-section of demographics, architecture, vibrancy and music. Sugar House is unique in that it is truly a "walkable" art and music scene,

with most venues within a five- to 10-minute walk. With the new Sugar House Street Car line, this "Jewel of Salt Lake City" will be accessible to art lovers from around the city. What a great way to experience art!



Gavin: What's your opinion on the galleries around SLC in general and the work they're doing to promote local art?

James: The Gallery Stroll is a more traditional event, focused on Fine Art represented in galleries. It is a wonderful event that supports many of our great Utah artists. From our point of view, the downtown area tends to enjoy most of the benefits of the Stroll. Our walk has no intention of taking anything away from the city's Gallery Stroll, but to bring some attention to one of the thriving art communities within the Salt Lake Valley. Participants of our Art Walk can see artists in their own "homes." Visiting an artist's studio is quite a different experience than visiting a gallery. The artists themselves are the hosts, and visitors can get a feel for the process of how art is created. Additionally, The Sugar House Art Walk Association's goal is to give exposure to some

non-traditional fine-artist venues, and artists of all kinds in the Sugar House Area. We hope participants of our Art Walk spend an entire evening in Sugar House, enjoying a variety of art, music, dining and dance.

Gavin: What can we expect from you and the Art Walk over the rest of the year?

James: Our theme for June is: It's All About Dad. July's Art Walk is centered around the first annual "Sugar House Jazz Festival" with the Wasatch Jazz Project -- Carol Stephens. Fall events will be featuring harvest events and live music



Gavin: Is there anything you'd like to plug or promote?

James: I personally find great satisfaction in my interactions between my family, customers and staff at The Joint. They all enjoy watching changing variety of art on display and our participation in promoting art and music in our local community. My son has created every Art Walk poster, which are pieces of art in themselves! Without the passionate assistance from my son, Laurie Bray, Emily Potts of Sugar House Coffee and Colleen Reynolds with 21st Studios, this event would have never succeeded.

<http://www.cityweekly.net/utah/blog-70-7714-sugar-house-art-walk.html>

CITYWEEKLY

THEATER

The Hive Theatre Company: Edward Albee's *At Home At The Zoo*



What would we do without Sugar Space—the quirky, out-of-the-way performance venue that’s a bit difficult to find until you learn the knack of turning west off 700 East at the exact right place? Once you get there, you discover the nurturing source from which so much of Salt Lake City’s theatrical talent is spawned.

Sugar Space’s latest product is theatrical powerhouse Jared Greathouse, notable as slick Hollywood producer Saul Kimmer in Wasatch Theatre Company’s 2011 production of *True West*. But, as it happens, Greathouse’s own theater company, The Hive, has been cranking out some provocative and very literary productions of its own. The latest, Edward Albee’s *At Home at the Zoo*, combines two of Albee’s one-acts: “Homelife” and “The Zoo Story.”

Both acts are connected through the character of Peter (Spencer Belnap), a Manhattan textbook publisher. Belnap’s reticent body language and careful baritone capture the studied dignity and self-effacement of the intellectual upper-middle-class.

Peter and his wife, Ann (Tiffany A. Greathouse, pictured above left), discuss domestic topics, progressing through uncomfortable and increasingly alarming issues of unfulfilled sexual desires and past exploits. But the real fireworks begin in Act 2, when Peter encounters Jerry (Jared Greathouse, pictured above right), an unhinged and self-destructive city denizen. This is Jared’s great moment to explode onstage, and his monologue about Jerry’s landlady’s dog is harrowing, emotionally devastating and ultimately exhausting. It’s really quite something to see on a hot summer night. Fortunately, Sugar Space has a decent, modern A/C system; otherwise, Jared’s intensity would have knocked us unconscious in the aisles. (Brandon Burt)

Date: Jun 8, 2012

Time: 8 p.m.

Phone: 888-300-7898

Address: 616 E Wilmington Ave (2190 South), Salt Lake City, 84106

Where: [Sugar Space](#)

<http://www.cityweekly.net/utah/event-114124-the-hive-theatre-company-edward-albees-at-home-at-the-zoo.html>



June Art Calendar

Written by Adele Flail

Creative Arts Program Summer Camp

If you're looking to start your preschooler or kindergardener on art, you both may find this summer camp appealing, with its blend of dance, drama, music, and visual art— helping participating youngsters learn through visual, auditory, and tactile/kinesthetic means while exploring a unique topic of the week (June boasts bugs, the Pacific Ocean, and dinosaurs.) Minimum of 8 classes required; tuition starts at \$230.

CAP Summer Camp, June 12 - August 16, 8:45a- noon. The Sugar Space, 616 East Wilmington Ave.

http://www.catalystmagazine.net/component/k2/item/1982-120604_ra_june_art_calendar?highlight=WyJzdWdhcilsInNwYWNIiwic3VnYXlgc3BhY2UiXQ==

CITYWEEKLY

HIP-HOP/RAP

Hip Hop Roots

In the oft-fractured world of hip-hop, one local-by-way-of-Las-Vegas evening of entertainment's goal is unity. Launched by LV's HighDro in 2008, the long-running night has expanded to other prominent Western cities. Now in its fourth month locally, Hip Hop Roots features headliners Toki Wright, a Minneapolis rapper with content-filled rhymes about community and culture, and local rapper Burnell Washburn, whose Utah-centric lyrics paint familiar scenery. The event also brings together an open mic, live painting, fire spinning, munchies and a swarm of other local MCs. (Savannah Turk)

Date: Jun 30, 2012

Time: 6 pm

Phone: 888-300-7898

Address: 616 E Wilmington Ave (2190 South), Salt Lake City, 84106

Where: Sugar Space

<http://www.cityweekly.net/utah/event-109771-hip-hop-roots.html>

The Salt Lake Tribune

Dance: New co-op dance company and Ballet Folklórico in the park

PUBLISHED JULY 18, 2012 9:14 AM

This is an archived article that was published on sltrib.com in 2012, and information in the article may be outdated. It is provided only for personal research purposes and may not be reprinted.

Co.da

Sugar Space is launching a new professional dance company, co.da, a collaborative that is interested in exploring new approaches to producing and performing dance. Members will meet for weekly meetings and rehearsals for shows they will help produce.

What • Weekly professional-level dance technique class.

When • Tuesdays, open to the public.

Also • Visiting guest artist Shannon Mockli will teach two master classes. Inaugural members will perform Aug. 2-4, 8 p.m.; with choreography by Mockli, plus company members Molly Heller, Nancy Simpson Carter and Jane Jackson.

Tickets • \$12 general, \$10 students; reservations and information at 888-300-7898

When • Tuesday, July 24, and July 31, 5:30 to 7 p.m.

Where • Sugar Space Studio for the Arts, 616 E. Wilmington Ave., Salt Lake City.

<http://archive.sltrib.com/printfriendly.php?id=54498835&itype=cmsid>

The Salt Lake Tribune

A new Sugar House dance company works at making art, together

Dance • Collaboration is the key to a new dance project.

BY KATHY ADAMS SPECIAL TO THE TRIBUNE

PUBLISHED JULY 21, 2012 7:18 PM

This is an archived article that was published on sltrib.com in 2012, and information in the article may be outdated. It is provided only for personal research purposes and may not be reprinted.

"I've come to a conclusion about dance and money: if dancers did not sometimes sleep with rich people, American dance as we know it would cease to exist," wrote Lightsey Darst, a National Endowment for the Arts fellow in a series of controversial blog entries on The Huffington Post last month.

Although Darst went on to clarify the comment — that many dancers are married to someone whose income supports them, or rely on parents helping with rent — her blog post titled "The Poorest Art: Dance and Money" was enough to reignite the age-old subject.

It also brings up a new twist on dance company funding. When the Los Angeles-based dance company Body Traffic in February won a \$25,000 grant from New York City's Joyce Theater Foundation, it was significant for several reasons. The Joyce Theater is the affordable equivalent of Lincoln Center for live dance performance in New York, and is a leading-edge force for dance presenting, funding, and education.

Funders are now looking away from the solo dance development process toward the paradigm of theater companies. "You have a producer, or a director, putting together a collaborative team; you have many, many opportunities to say it's not working out," said Linda Shelton, Joyce Theater's executive director, in a recent story published in The Los Angeles Times. "Or, if there is no market interest or demand, you can change gears. In dance, work is usually made in isolation without feedback in the process."

Enter Brittany Reese. Reese, originally from Salt Lake City, danced in New York and returned to have a family. She founded Sugar Space Studio for the Arts in 2007 and has since hosted multi-disciplinary arts programs, performances, artist residencies. She also rents the space for community classes and events.

Reese is taking the idea of collaboration seriously with her new company, the Sugar Space cooperative dance company, or co.da. The company has no single artistic director

but lots of rules. It's hard to tell whether Reese's experience in laying down expectations comes from a business model or parenting books.

"I am not a traditional artistic director, but I do provide guidance and guidelines for both the aesthetic and the jobs that are required to be in the cooperative," she said.

The Sugar Space website has a comprehensive list of requirements members should be aware of before even washing out their leotard to audition. It includes the financial structure and how company funds will be broken down in percentages — everything is out on the table. Contracts last for only six months. So anyone can get voted off the island, so to speak, by the other members. Or, on the positive side, be elected to choreograph for other members of the company.

"From the beginning, I wanted to provide a home base for choreographers to produce new work," Reese said. "With the Sugar Show and other efforts I've donated the physical space with lighting, marketing, and presenting. What I'd hoped would happen is that these people would continue to choreograph and develop a body of work, but that hasn't happened."

Reese said the cooperative is another shot at helping choreographers develop work over time, give dancers a place to dance, and still pay the rent and keep the lights on.

In return for the dancers' administrative work, they get performing opportunities and a professional-level class. Plus every six months an out-of-town guest choreographer will arrive to infuse new ideas into the system. The guest artist receives lodging, dancers to choreograph on or with and a stipend.

Co.da company member Ariane Audd said she doesn't consider the extra administrative responsibilities a burden. "I think there is a higher level of mutual respect for each other, as we switch roles from dancer to teacher to choreographer," Audd said. "There is more trust and therefore more commitment to the group and a greater drive for us all to succeed."

The upcoming performance will give audiences a peek at how well the concept is working at its launch, with another opportunity to check in six months down the road.

features@sltrib.com —

Come together, right now

The inaugural members of the Sugar Space cooperative dance company — known as co.da — will culminate their term with a performance Thursday-Saturday, August 2-4 at 8 p.m. Choreography will be presented by guest artist Shannon Mockli, as well as by company members Molly Heller, Nancy Simpson Carter, and Jane Jackson.

Tickets • \$12 general admission, \$10 students at the door;

Where • Sugar Space, 616 Wilmington Ave., Salt Lake City; 888-300-7898

Artist-in-residence • Co.da's first resident artist is Shannon Mockli, professor at University of Oregon, who will be returning to Salt Lake City to present a solo, and

setting a new work on the ensemble. She will also be teaching open master classes on Tuesday, July 24 and Tuesday, July 31 at 5:30-7 p.m. at Sugar Space.

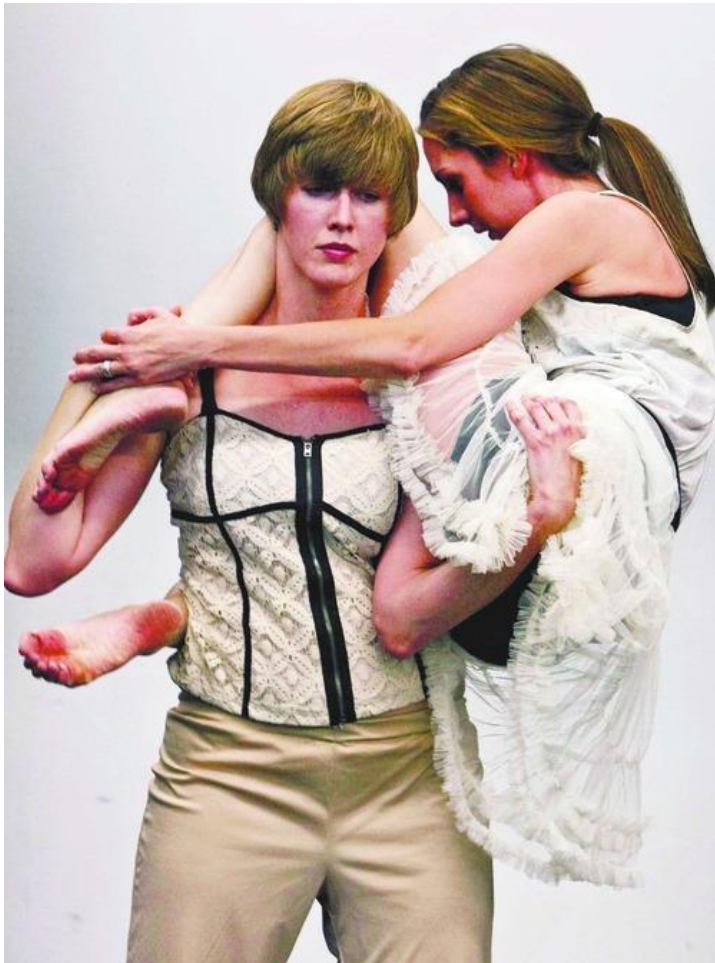
Photos:



Leah Hogsten | The Salt Lake Tribune Anne Marie Smock, Shira Fagan and Jane Jackson rehearse



Leah Hogsten | The Salt Lake Tribune Anne Marie Smock, Jane Jackson and Shira Fagan rehearse



Leah Hogsten | The Salt Lake Tribune Shira Fagan, holding Anne Marie Smock, rehearses



Leah Hogsten | The Salt Lake Tribune Anne Marie Smock and Shira Fagan, holding Jane Jackson, rehearse



Leah Hogsten | The Salt Lake Tribune Shira Fagan, Anne Marie Smock and Jane Jackson rehearse



Leah Hogsten | The Salt Lake Tribune Shira Fagan, Anne Marie Smock and Jane Jackson (left to right) rehearse



Leah Hogsten | The Salt Lake Tribune Shira Fagan and Jane Jackson rehearse



Leah Hogsten | The Salt Lake Tribune Nancy Carter (right) talks with the trio of dancers during rehearsal of her work

<http://www.sltrib.com/sltrib/news/54531277-78/dance-company-space-sugar.html.csp>

CITYWEEKLY

SPECIAL EVENTS & FESTIVALS

Indie Underground Fundraiser



This tertulia will be featuring many of Wasatch's artists in an attempt to raise funds for non-profits Revolution United and Salt City Indie Arts who work to produce and sustain needed community programs. The all ages event will be \$10 at the door. For more info click [here](#).

Date: Jul 27, 2012

Time: 7:45 pm

Phone: 888-300-7898

Address: 616 E Wilmington Ave (2190 South), Salt Lake City, 84106

Where: [Sugar Space](#)

<http://www.cityweekly.net/utah/event-125179-indie-underground-fu.html>

CITYWEEKLY

DANCE

Night At The Casbah

Come and celebrate an evening of danse orientale with Thia, Whirlwinds of Broglia, Midnight Mirage Dance Company, Troupe Amara, Troupe Tarab, Sofia. Lotus Troupe, Wysteria, Ultima, Tirza, Jamilah, Katya, Ghajariyah, Kim, Abenta Rising, Lotus Buds, Amanda, Shasha and La Mystique. Tickets are \$10 in advance or \$12 at the door. (Sugar Space)

Date: Jul 28, 2012

Time: 8 pm

Phone: 888-300-7898

Address: 616 E Wilmington Ave (2190 South), Salt Lake City, 84106

Where: Sugar Space

<http://www.cityweekly.net/utah/event-125200-night-at-the-casbah.html>

CITYWEEKLY

DANCE

Co.Da: Starter.Kit



Sugar Space is a small performance theater nestled in the heart of Sugar House, operated by dancer/choreographer Brittany Reese. Now, instead of just providing a great venue and support for others' work, Reese has decided to create Sugar Space's own professional dance company, called co.da. Christened after a unique concept, co.da is a collective dance company that brings together a new set of dancers every six months through an open audition process. Prospective new members are voted into the group by current members, which ultimately ensures both creative influx and some artistic continuity. The whole structure is designed to ensure an ever-evolving, boundary-pushing vision for the two programs scheduled per calendar year.

Starter.Kit, directed by Reese, is the inaugural performance to be staged by this new collective. Choreography will be presented by Nancy Simpson Carter, Molly Heller, Anne Marie Robson Smock, Jane Jackson, guest artist Shannon Mockli and Shira Fagan. (Jacob Stringer)

Date: Aug 2, 2012

Time: 8 pm

Phone: 888-300-7898

Address: 616 E Wilmington Ave (2190 South), Salt Lake City, 84106

Where: [Sugar Space](#)

<http://www.cityweekly.net/utah/event-125231-coda-starterkit.html>

CITYWEEKLY

DANCE

Starter.Kit: An Evening Of Dance



Sugar Space's own cooperative dance company, co.da, will be presenting an evening of dance to introduce the professional company. Tickets are \$12 for general admission and \$10 for students.

Date: Aug 2, 2012

Time: 8 pm

Phone: 888-300-7898

Address: 616 E Wilmington Ave (2190 South), Salt Lake City, 84106

Where: [Sugar Space](#)

<http://www.cityweekly.net/utah/event-124590-starterkit-an-evening-of-dance.html>

CITYWEEKLY

DANCE

Shimmies And Shakes



Yasmina Roque and Sugar Space introduce the people of Utah to the culture of danse orientale. Sugar Space will transform into an exotic casbah that features talented and beautiful dancers.

Date: Sep 15, 2012

Time: 8 pm

Phone: 888-300-7898

Address: 616 E Wilmington Ave (2190 South), Salt Lake City, 84106

Where: [Sugar Space](#)

<http://www.cityweekly.net/utah/event-128692-shimmies-and-shakes.html>

CITYWEEKLY

ROCK

Stuart Davis

Stuart Davis' nickname, "The Punk Monk," is more a semi-clever rhyme than an accurate moniker. Yes, Davis is a practicing Buddhist monk (as his bald dome attests), but this singer-songwriter conjures more Sting and Bob Dylan than Misfits or Dead Kennedys. Davis is as dichotomous as his nickname might allude, though. Whether on his HDNet TV show Sex, God, Rock 'n Roll or during his concerts, he's full of sly wit and banter between near-virtuosic guitar riffs; he is cheeky in tongue, but he also explores thoughtful themes like spiritual awakening, death and "the mess of being human"—heard on the recent Music for Mortals.

Date: Sep 29, 2012

Time: 8 pm

Phone: 888-300-7898

Address: 616 E Wilmington Ave (2190 South), Salt Lake City, 84106

Where: Sugar Space

<http://www.cityweekly.net/utah/event-129625-stuart-davis.html>

The Daily Utah CHRONICLE

Drag queens strut their stuff in show, Saxon takes 1st place

Anne Plummer

by: Anne Plummer on October 5, 2012



[media-credit id=138 align="alignright" width="300"] Drag queen Angela Saxon puts on a winning performance at this year's Drag Show at Sugar Space on Thursday night.

Students cheered as cross-dressers shook their hips on the Sugar Space stage at the Drag Show on Thursday as part of the U's Pride Week.

Drag queen Angela Saxon took first place in the competition, receiving the most cheers from the audience.

"I feel so happy and so excited and so surprised," Saxon said. "I think there was so much talent."

Queens Wanda Lust — or Lamia — Opal Skye, Saxon and Klaus von Austerlitz dressed in sparkles, red wigs, fishnet stockings and high heels, dancing and lip syncing to pop songs such as "Call Me Maybe" by Carly Rae Jepsen and "Telephone" by Lady Gaga as the audience clapped along to the beat.

von Austerlitz performed to "Call Me Maybe" with a doll-like dance until the remixed chorus, when she added her own flare by dancing like a monster.

"I'm spooky all of the time. I'm kind of a whore king," von Austerlitz said. "I enjoy taking something really cute and innocent into something spooky."

As a drag queen, von Austerlitz said she doesn't like to wear breasts or high heels. She says she tries to take the less sexist approach to cross-dressing, saying she could be a "feminist queen."

Judges watched the performers in their makeup, lip-syncing and dancing. The judges included Kathryn Kay, director of Orientation and Leadership Development at the U, Rachelle Beagley, makeup artist and owner of Pryme Makeup Art, Lamia, last year's drag queen winner, and Eduardo Galindo or "Wanda Lust," drag queen, ASUU diversity director and a senior in health promotion and education.

One of the judges said competitor Rara was "stirring up some cheesecake" with her hot moves, and another said, "I was too scared not to give von Austerlitz a high score."

Judges chose two of the favorite drag queens, von Austerlitz and Saxon, for the "Lip Sync for Life" competition, encouraging them to "keep your heels on" and "lip-sync your heart out."

Saxon is involved with the Lesbian, Gay, Bisexual and Transgender Resource Center on campus and said she would do anything — such as performing as a drag queen at the show — to support the center in its work.

"I think the people that do the show are really brave," said Sam Ortiz, a junior in social work and a volunteer for the Drag Show. "For some people, it's a really important part of their identity. It's a vulnerable spot to be in."

Ortiz said everyone wants to feel beautiful, and for some it takes a different form.

Volunteers gathered donations for scholarships and emergency funds for the LGBT Resource Center.

Galindo organized the event and said it was important for someone from student government to take part in an event like the Drag Show.

"It acknowledges the culture, it acknowledges the identity and it shows we're not afraid to do fun things," Galindo said.

Contact Anne Plummer at a.plummer@chronicle.utah.edu

Posted by

Anne Plummer on Oct 5 2012. Filed under Campus News

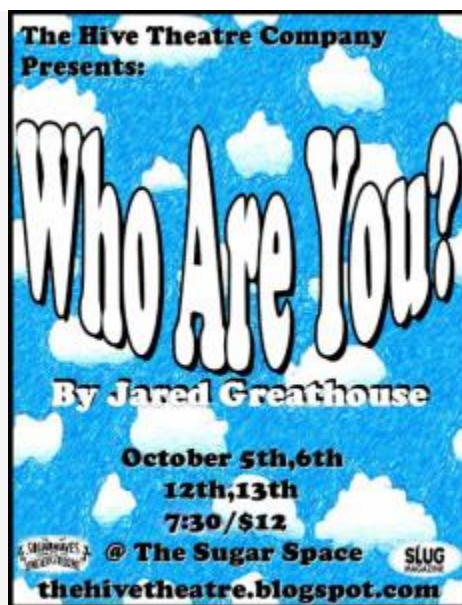
<http://www.dailyutahchronicle.com/?p=2577440>



The Hive's WHO ARE YOU? leaves many questions, few answers

October 9, 2012 by [Melissa Leilani Larson](#)

SALT LAKE CITY — As a playwright and a theatre teacher, I am always excited to see new work. Saturday night at the Sugar Space was no exception, as I had the chance to see and experience *Who Are You?*, a new play written and directed by [Jared Greathouse](#) and produced by the Hive Theatre Company.



Show closes October 13, 2012.

Who Are You? is the story of what could happen when a woman wakes up one morning and doesn't recognize the man sharing her bed. I don't want to give away the plot as there are a number of twists, and a lot of the comedy relies on the power of surprise. I will go as far as to say Jerry and Stephanie Bickmore—the couple at the center of this dark comedy—go through a major identity crisis as the play progresses.

There is a lot of potential for fun in this script. I admire Greathouse for abandoning what could have been an ordinary romantic comedy in favor of tackling something more exciting and bizarre. The show is very simple, its design very straightforward, allowing the audience to focus on the performances and the script. The cast ([Tiffany A. Greathouse](#), Nate Keyvani, Elise C. Hanson, Joel Pepino, Victoria Gonzalez, Christopher Stephenson, [Michele Rideout](#), Andy Maizner, Dave Bohnet, Eric Leckman) all seemed to be

having a good time, and there were some nice moments of chemistry among them—again, I can't get too specific without spoiling the plot. However, while I appreciate what I think Greathouse is trying to do with this piece of theatre, I don't know that it was quite accomplished.

I love theatre that forces me to think. That asks questions that require thought and contemplation on the part of the audience. At the same time, there are a certain number of questions that the play should also answer as its story unfolds on stage. While *Who Are You?* asks a number of deep, fascinating philosophical questions—and that I applaud—I don't know that it answers all of the structural and theatrical questions its audience requires.

For example, I'm not sure exactly what the rules of this particular world are. There are some funny moments—one of my favorites was a bit in which Jerry doesn't realize he's speaking Spanish. While many of these moments are very enjoyable, they don't track with the structure of the story. Why does Jerry click into Spanish mode? The lights simply come up and he does. And then after a bump to the head—I think—he's back to speaking English. It's a device used twice—the second time much more briefly than the first—and then never again. There are a lot of quick, fun moments that don't quite add up. Cell phones don't work, boxer shorts get flashed, bananas are thrown around, and the shifts between scenes are slightly reminiscent of the classic comedy film *Groundhog Day*. Sure, it's funny, but does it move the story forward? On top of all this, there are voices that speak to Jerry from the audience, criticizing his work as a playwright. No one hears these voices but Jerry. Is he losing his mind? When he looks in the mirror, he doesn't see himself. Is he going crazy? Am I going crazy right alongside him?



The thing is, after seeing this show, I don't know much about it. Who is Jerry Bickmore? What does he want? I can't tell you the answer to either question, and usually I leave a show at least knowing what the protagonist wants, and what he or she is willing to do to get it. Near the beginning of the first scene, Jerry expresses to Stephanie some of his frustration as a playwright. Is that frustration the fuel for anything else that happens in the show? Is Jerry suffering from low self-esteem? Is he contemplating suicide? Did he recently have his work rejected? I can only guess as to the genesis for the absurdities that happened on stage.

All of the action happens in the Bickmores' bedroom. While this is a house where things are clearly out of the ordinary, no one tries to escape it. No one tries to flee through a window or bang their way out the front door. What is keeping everyone inside the house? There are several moments in which Jerry's life is

in danger. Why doesn't he ever try to get out—literally try to escape? He doesn't; he just stays on stage and lets weird things happen to him. I don't understand why Jerry stays. Or why Stephanie stays, for that matter. She screams when she first looks Jerry in the eye—she screams and defends herself, claiming he isn't her husband. But she doesn't do what a lot of people in a similar situation would do—she doesn't run away. She stays and, eventually, just accepts him for who he claims to be.

I found myself doing pretty much the same thing—letting myself accept what was happening because I couldn't figure out what else to do with what I was seeing.

The biggest question for me throughout the evening was simply this: Why? Why was all of this happening? The end of the show is quite dark, which doesn't really mesh with the romantically comic tone first set between Jeff and Stephanie. I was left unsure in the end what to believe—was it all real? Or just a dream? Does Jeff Bickmore really exist? Is Jeff Bickmore really Jared Greathouse, and Jared doesn't know it? There are so many fascinating questions posed in *Who Are You?*. Sadly, for me, there just weren't enough answers.

*The Hive Theatre Company's **Who Are You?** plays at the Sugar Space Studio for the Arts (616 Wilmington Ave., Salt Lake City) October 12 and 13 at 7:30 PM. Tickets are \$12. For more information, visit thehivetheatre.blogspot.com.*

<http://utahtheatrebloggers.com/13263/the-hives-who-are-you-leaves-many-questions-few-answers>

CITYWEEKLY

THEATER

The Hive Theatre Company: Who Are You?



Jared Greathouse's exciting new play is a sophisticated tour de force. Operating on several different levels, *Who Are You?* twists theatrical conventions and offers a mind-bending commentary on the nature of identity.

As Lily Tomlin once quipped, reality may be nothing more than simply a "collective hunch," one perhaps borne out of habit, even laziness. Do we wake up every day and see only what we expect to see? *Who Are You?* jolts the audience out of this complacency, contravening assumptions, particularly regarding the identities of familiar—and not-so-familiar—characters. "During the whole process, I wanted to keep the audience ... just a little uneasy," Greathouse says. "I didn't want them to get too comfortable. Whenever they think that they might just have it all figured out, a new element is added."

A blinding, blue gel effect signals the state between sleep and wakefulness, as Jerry (Nate Keyvani) and Stephanie (Tiffany Greathouse) begin their morning to the familiar, yet oddly disorienting strains of The Who playing on the clock radio. Each time this happens, the couple finds themselves thrust into an ever-more-abstracted reality until, by Act 3, the world has become an unrecognizable, threatening place.

Character names are not provided with the cast list because this would give away a central surprise. However, note that Greathouse appears under the stage name Joel Pepino. Greathouse's sly mischief extends even to the curtain call, which violates the standard theatrical format and seemed to keep the audience suitably confused. (Brandon Burt)

Date: Oct 12, 2012

Time: 7:30 pm

Phone: 888-300-7898

Address: 616 E Wilmington Ave (2190 South), Salt Lake City, 84106

Where: Sugar Space

<http://www.cityweekly.net/utah/event-130737-the-hive-theatre-company-who-are-you.html>

CITYWEEKLY

SPECIAL EVENTS & FESTIVALS

Sugar Space: Fall Harvest Festival



This celebration will include activities for children and all things warm and wonderful about fall for adults. Join us at Sugar Space for: free performances of dance, music, theater; a kids' Activity area; a Chili Cook-off; and a lot more

Date: Oct 26, 2012

Time: 2 pm

Phone: 888-300-7898

Address: 616 E Wilmington Ave (2190 South), Salt Lake City, 84106

Where: [Sugar Space](#)

<http://www.cityweekly.net/utah/event-131412-sugar-space-fall-harvest-festival.html>

CITYWEEKLY

CHILDREN & FAMILY

Sugarhouse Art Center: Comunity Social



Join us in our first Sugarhouse Art Space Community Social! Enjoy a potluck, open-mic, and provided refreshments. Activities will be provided for all ages.

Date: Dec 7, 2012

Time: 6 pm

Phone: 888-300-7898

Address: 616 E Wilmington Ave (2190 South), Salt Lake City, 84106

Where: Sugar Space

<http://www.cityweekly.net/utah/event-133306-sugarhouse-art-center-comunity-social.html>

CITYWEEKLY

SPECIAL EVENTS & FESTIVALS

Yule Ball



The Rocky Mountain Muggles will hold the fanciful 2012 Yule Ball at Sugar Space. The event will be a formal dance with music, food, games, magicians, fortune tellers, and photo booths. Costumes are optional but formal wear is required. Professor McGonagall of the Rock Mountain Muggles says: "The Yule Ball is of course a chance for us all to – er – let our hair down...But that does NOT mean we will be relaxing the standards of behavior we expect from muggles and wizards alike. I will be most seriously displeased if a Gryffindor embarrasses the ball in any way." Guests must be at least 16 years old to attend.

All proceeds will benefit the Make-A-Wish Foundation. The Rocky Mountain Muggle Association is a Harry Potter themed volunteer organization that focuses on aiding various non-profits in our community. The event will end at 10 p.m.

Date: Dec 8, 2012

Time: 6 pm

Phone: 888-300-7898

Address: 616 E Wilmington Ave (2190 South), Salt Lake City, 84106

Where: Sugar Space

<http://www.cityweekly.net/utah/event-133497-yule-ball.html>

CITYWEEKLY

{CATEGORY_NAME}

Sugar Space: Winter Land Aerial Showcase



Come join some of Utah's most dedicated and talented aerialists for one night only as they turn Sugar House into a winter land of pole and aerial enchantment. Students and instructors from all over the Salt Lake valley will allure you with their passion for the aerial arts as they whirl and spin through the air at Utah's first "The Winter Land Aerial Showcase". Enjoy special guest performance by Beate Derangee, and DJ Jarvicious as he creates a wintery cascade of musical thrills. This night is sure to be the climax of this year's holiday season.

Date: Dec 16, 2012

Time: 7 pm

Phone: 888-300-7898

Address: 616 E Wilmington Ave (2190 South), Salt Lake City, 84106

Where: [Sugar Space](#)

<http://www.cityweekly.net/utah/event-132475-sugar-space-winter-land-aerial-showcase.html>